



Strategic planning and the MER

Fahima Munshi and Oliver Traynor

Our school – who we are

- Mixed comprehensive
- 1323 students on roll
- 61.2% boys
- 9.1% SEN/SA+
- 87.6% EAL
- 58% FSM
- Judged 'Outstanding' by OFTSED in 2009 and 2012

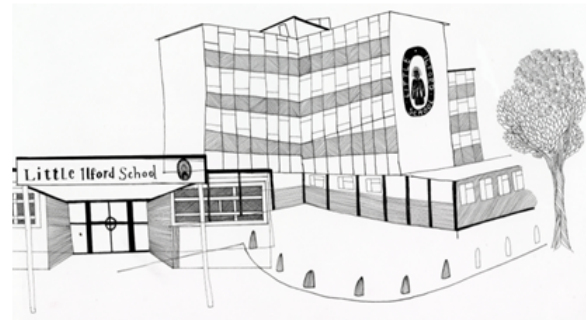
Little Ilford School



Learning Together, Achieving Together, Succeeding Together.

Founded in 1957, Little Ilford School is a successful mixed multicultural 11-16 secondary school with 9 forms of entry situated in the London Borough of Newham.

- We are a high achieving school described by Ofsted as outstanding in their last inspection in 2012. We are a proud, diverse and celebratory institution that enjoys an excellent reputation and strives to be an outward facing school working closely with our community.
- We are culturally rich with an ethos based around praise, support and caring for each other. We have very high aspirations for the students whatever their personal or social challenges; we systematically remove all barriers to learning to ensure that all of our students can fulfil their potential and leave us as fully active citizens of the Manor Park community.
- Most of our students begin at LIS well below national standards but achieve in line with, or exceed, national standards when they leave in Year 11; our students achieve well above national rates of progression. We expect all of our students to excel.
- We intend to ensure that our students achieve even higher rates of progress and outcomes through high quality learning and teaching and a curriculum that provides opportunities for all students to excel.



Our school - department



A team of 20

- 1 CTL
- 2 KS4 leaders
- 1 Triple Science Coordinator
- 1 KS3 Coordinator
- 12 Teachers
- 3 Technicians
- PGCEs/Teach Firsts



Situation

Results

Task

Action





Ofsted outstanding in 2012

.....however we know Science can
improve even further



**Even though the progress students
make in Science is great.....we can
always do more**

**Improve student progress to exceed
current levels through the implementation
of a 5 year GCSE and a systemised
approach to Teaching & Learning.**

A

Without this, your team will not support the changes you suggest and feel at ease with the strategies you need, such as book looks and learning walks.



Team

- Choose your team wisely
- Responsibility
- Consistency
- Team spirit
- Cohesion
- Shared vision

1

Psychological Safety

Team members feel safe to take risks and be vulnerable in front of each other.

2

Dependability

Team members get things done on time and meet Google's high bar for excellence.

3

Structure & Clarity

Team members have clear roles, plans, and goals.

4

Meaning

Work is personally important to team members.

5

Impact

Team members think their work matters and creates change.

How we share information:



Yearly

- Vision



Our vision:

'To achieve 100% 3LP and 70% 4LP; through teaching AQA exam skills explicitly from Year 7 and enjoyment of learning related to everyday life'.

How we share information:



Yearly

- Vision and 5 year plan



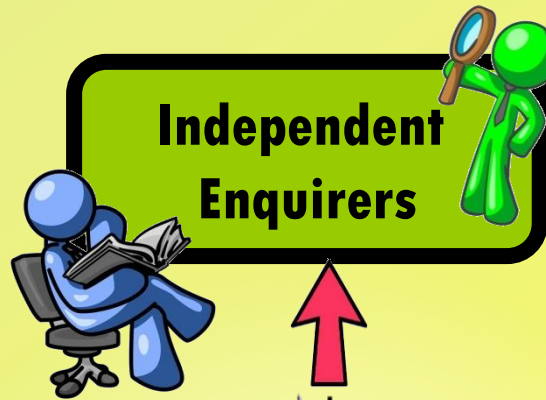
Curriculum planning (5 year plan)

This is one of the processes we are currently undertaking with the draft specification. See the version from the previous change!

Year	Content/knowledge	Concepts	Skills	LILLS	Progress/assessment
Y11					
Y10					
Y9					
Y8					
Y7					



**Self and
Wellbeing**



**Independent
Enquirers**



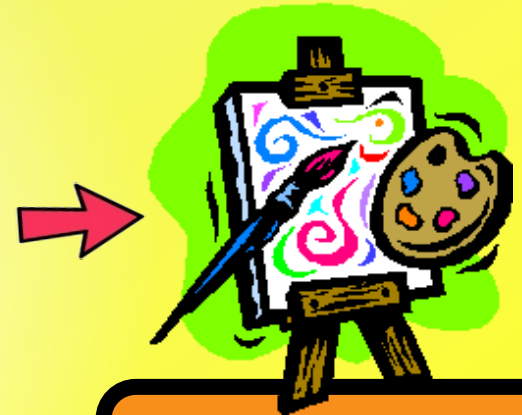
Teamwork



Leadership



**Little Ilford Life Long
Learning Skills**



**Creative
Thinkers**



Reflective Learners



**Effective
Participators**

How we share information:



Yearly

- Vision and 5 year plan
- Department improvement plan
- Route throughs



Route throughs



Learning walks to ensure teachers are at expected points.

Provides evidence for MER and can be adapted and reviewed

Key school dates shared with teachers

		Lesson	Assessment	
		INSET		
		Analysis		
2	07-Sep-15	B3: Exchange of materials: 1.2: Active transport		
		B3: Exchange of materials: 1.3: The sports drink dilemma		
		B3: Exchange of materials: 1.4: Exchanging materials – the lungs		
		Alveoli explanation		
		B3: Exchange of materials: 1.5: Ventilating the lungs		
3	14-Sep-15	B3: Exchange of materials: 1.6: Artificial breathing aids		
		Lung transplant rejection explanation		
		B3: Exchange of materials: 1.7: Exchange in the gut		
		B3: Exchange of materials: 1.8: Exchange in plants	Practical: Nail polish and leaves	
		B3: Exchange of materials: 1.9: Transpiration		
4	21-Sep-15	Practical: Evidence for transpiration		
		B3.1: EOT	Teacher assessed	
		C3: The periodic table: 1.1: The early periodic table	Learning Walk: Non - negotiables	
		C3: The periodic table: 1.2: The modern periodic table		
		C3: The periodic table: 1.3: Group 1 - the alkali metals	Demo: Reactions of alkali metals with	
5	28-Sep-15	C3: The periodic table: 1.4: The transition elements		
		C3: The periodic table: 1.5: Group 7 - the halogens		
		Practical: Displacement reactions		
		C3.1: EOT	Peer assessed	
		C3.1: EOT Peer assessment feedback	Book look: Formative feedback	
		B3.1: EOT Teacher assessment feedback		
		P3: Medical applications of physics: 1.1: X-rays		
		P3: Medical applications of physics: 1.2: Ultrasound		
		Refractive index		
		Endoscopes	Demo: Total internal reflection	Wednesday 14th Oct (Using B3.1 EOT test and TA)
		Lenses		
		Concave lenses		
		Convex lenses		
		The eye		
		More about the eye		

Support provided for teachers who are struggling to keep up

Book looks expected to cover content up to route through.

Key: Accountability and consistency

How we share information:



Yearly

- Vision and 5 year plan
- Department improvement plan
- Route throughs

Every
half term

- Route through checks
- Strategic plan



Whole school	6 th June B	13 th June A	20 th June B	27 th June A	4 th July B	11 th July A	18 th July B
	CTM 11 CTLM Student Leadership Elections start. Y9 TA3 CTL check Y10 TA4 Data entry & CTL check Y11 TA5 Data entry <u>Kerhoodle Training</u> JPT: Physics Factory	HOME & FAMILY WEEK Y11 TA5 CTL check Y8 TA4 Data entry	YTM SSAT Presentation, (FMU & OTR). Y8 TA4 CTL check Y7 TA4 Data entry Thames Water trip to Sarah <u>Bumell</u>	Staff <u>mtg</u> CTLM Praise week: Creative thinkers Y7 TA4 CTL check	Home learning check Eid school closure Citizenship day prep.	CTM 12: KS3 Formative feedback & work scrutiny. Home learning check Citizenship day	Sports day Activities day
Route through							
	Y11 Additional & Further Additional Biology	Y11 Add. & F. Add. Chemistry and Physics	Peer Observations Y9 Combined & Separate sciences work scrutiny LW focus: Formative feedback	Peer observations Y10 Additional work scrutiny LW focus: Formative feedback	Peer observations KS3 Work scrutiny LW focus: Formative feedback	KS3 Work scrutiny, (CTM 12). LW focus: Formative feedback	
Leaders Actions							
PBA	1. Policies: H&S	MER 1.H & S					

	1. Policies: H&S 2. Science review: formative feedback	MER 1.H & S compliance PBA 2.Department Planning: Combined course					
--	---	---	--	--	--	--	--

Dept. Responsi bilities:							
MBE	Cultural/social/spirit		Examples: Y7:				

SAK	ual/ethical/ coordinator.	Pass on science topics in the news with links.	magnetic waves Y10: Dark matter				
NKA	: Progress boards	Y11 should be up in rooms now.	Y10 Analysis				
RKU	:HL coordinator		HL check w/c:				
LOB	:Transition coordinator :Physics Factory coordinator	Liaise with NAH for next steps Working with SBU	JPT w.c.6 th June				
FRA	:SEND coordinator	Contact re: visit during CTM/JPT time. P/Copy new SEND information and check it is in teacher planners	Science review: Strategies for K students from MAT				
NSU	:BTEC coordinator/new course	BTEC ended!					

	B		A		B		A		B					
W/B	Monday 6 th June		Monday 13 th June		Monday 20 th June		Monday 27 th June		Monday 4 th July		Monday 11 th July		Monday 18 th July	
	CTM 11 CTLM – revision class before B3 exam Y9 TA3 CTL check Y10 TA4 Data entry & CTL check Y11 TA5 Data entry Kerboodle Training JPT: Physics Factory <u>B2 and B3 Exam Friday 10th June</u>		HOME & FAMILY WEEK Y11 TA5 CTL check <u>C2 and C3 Exam Wednesday 15th June</u> <u>P2 and P3 Exam Friday 17th June</u>		YTM <u>SSAT Presentation, (FMU & OTR)</u> Y8 TA4 CTL check Y7 TA4 Data entry Thames Water trip to Sarah Bonnell		<u>Staff mtg</u> CTLM		Home learning check <u>Eid school closure</u> Citizenship day prep.		CTM 12: KS3 Formative feedback & work scrutiny. Home learning check <u>Citizenship day</u>		<u>Sports day</u> <u>Activities day</u>	
FMU	Write up IPAD course notes and organise day to share with Dept Complete Alfiesoft Bid Meet with OTR and plan SSAT presentation		Collect data for SSAT presentation		<u>SSAT presentation</u> Plan CPD presentation		<u>MONDAY:</u> Frederick Bremer <u>School visit – obs – Monday P1</u> <u>CPD presentation</u>		<u>Learning walk – Tuesday – P1</u> Plan CPD resources for 2016		<u>Learning walk – Wednesday – P4</u> Plan CPD resources for 2016		Plan CPD resources for 2016	
Year 8 – potential triple science students			Book Science live Provisionally for next year								Check Mock results with Year 8 list			
Year 11 Triple (Further Additional)	<u>Year 11 revision classes</u>		<u>Year 11 revision classes</u>											
Year 10 Triple (Additional)	Print Exam papers for CAUs Organise computer rooms for CAUs Organise to meet with teachers		Meet with teachers re: CAUs Annotate mark scheme Check with Trip all equipment for CAU has arrived Organise Further Additional Science Revision guides		<u>CAU start</u> Give all teachers paperwork for CAU		<u>CAU learning walk</u> Letters to parents re: Revision guides		<u>CAU learning walk</u> Revision guides out to students for independent learning		<u>CAU Section 1 marks submission – 14/07/16</u>		<u>CAU lessons/independent learning projects</u>	
Year 9 Triple (Biology)	Plan new spec. lessons		Plan new spec. lessons <u>Year 9 assembly about how to revise – Monday 13th June</u>		Plan new spec. lessons <u>Reminder email – book look and LW</u> Letters to parents re: Mock 3		Plan new spec. lessons <u>Y9 9 Triple LW (formative feedback).</u> Give Mock 3 to repro		Plan new spec. lessons Organise/book external visits for next year – Epping Forest and Greenwich observatory <u>Mock 3</u>		Plan new spec. lessons		Plan new spec. lessons Mock 3 results letters to parents	

How we share information:



Yearly

- Vision and 5 year plan
- Department improvement plan
- Route throughs
- Strategic plan

Every
half term

- Route through checks
- Learning walks
- Work scrutiny

Weekly

- Weekly bulletin of key points and leaders' meetings





Science Department weekly bulletin 33 – 20th June 2016



*Our vision: 'To achieve 100% 3LP and 70% 4LP;
through teaching AQA exam skills explicitly
from Year 7 and enjoyment of learning related
to everyday life'.*

<u>Important dates:</u>	Y8 TA4 / Y7 TA4 entry	<u>Wk B</u>
Monday 20 th June	- YTM	
Tuesday 21 st June	- Literacy Learning walk P1	
Wednesday 22 nd June	- Life without levels working party, (OTR /	
IRA) 3.15pm	Literacy LW P2	
Thursday 23 rd June	- SSAT presentation, (OTR /FMU)	
Friday 24 th June	- JPT New curriculum planning, Literacy LW	
P4		

Strategy focus:

- ❖ Drop down Y11 time: New curriculum planning – see list below. Please utilise this time; it is vital that these lessons are done properly. Olly will be issuing you with a folder of resources on Wednesday.
- ❖ We will be doing Learning Walks during Y11 time – so don't be caught out gossiping!!!
- ❖ Y8: Use results of transition tests to set the focus of the practical of your choice. Use the resources put on the system by OTR.
- ❖ Please be diligent with data entry to avoid bad press for the science department. Some of us are still being caught out!
- ❖ Decant procedures: Remember; we need to be doing; ***little & often.***

An example of
a bulletin

How we share information:



Yearly

- Vision and 5 year plan
- Department improvement plan
- Strategic plan
- Route throughs

Every
half term
term

- Route through checks
- Learning walks
- Work scrutiny

Weekly

- Weekly bulletin of key points and leader meetings

Regularly

- Reports to teachers - CTM, one-to-ones, reminder emails





Situation

Results



Task

Action



New GCSE

New Vision

New Vision

To implement not just skills but exams





- Update route throughs
- Plan new curriculum lessons and resources
- Implement MER

The MER



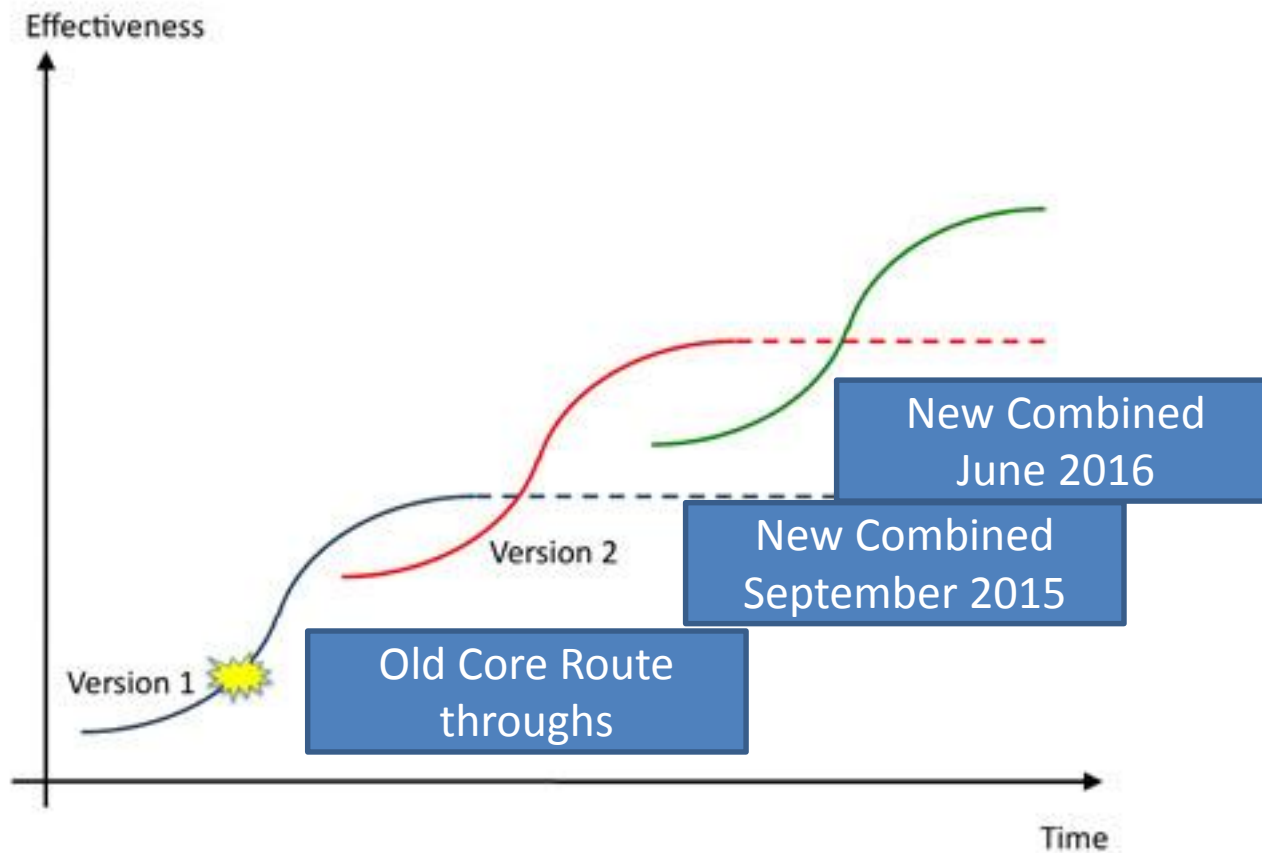
A bespoke monitoring, evaluation and review system that gives incisive information about the performance of the team;

- System dependent not person dependent;
- Know the strengths and areas for development of the team
- Aid to staff development – highlights CPD and helps to inform DPP
- Evidence of self evaluation
- Self improving school system



Little Ilford School
MER Impact statement
Autumn 2015

Item	Strategies implemented	Overall impact	Next steps
Achievement of Y11 Pupils			
Quality of Teaching			
Behaviour and Safety			
Quality of Leadership and Management			



Route throughs

Clear
systemised
approach to
the curriculum



Combined Science Routethrough - Year 1		
Week	TA dates	Info.
1	31-Aug-15	
		Intro to course/Admin
		Cell Biology -Lesson 1: Microscopy
2	07-Sep-15	Lesson 1: Microscopy
		Lesson 2: Animal and Plant Cells
		Lesson 2: Animal and Plant Cells
		Lesson 3: Specialised Cells
		Lesson 4: Stem Cells
3	14-Sep-15	Lesson 5: Prokaryotic and Eucaryotic Cells
		Lesson 6: Chromosomes (Teach with Lesson 7)
		Lesson 7: Mitosis and the Cell cycle
		Lesson 8 Diffusion
4	21-Sep-15	Lesson 8: Diffusion
		Lesson 9: Osmosis
		Lesson 9: Osmosis
		Lesson 9: Osmosis
		Lesson 10: Review/EOT
5	28-Sep-15	Lesson 10: Review/EOT
		Atomic Structure Lesson 1: Atoms and Elements
		Lesson 1: Atoms and Elements
		Lesson 2: Mixtures
6	05-Oct-15	Lesson 2: Mixtures
		Lesson 3: Models of the Atom
		Lesson 3: Models of the Atom
		Lesson 4: The structure of the Atom
		Lesson 5: Electronic Structure
7	12-Oct-15	Lesson 5: Electronic Structure
		Lesson 6: The Periodic Table and its history
		Lesson 6: The Periodic Table and its history
		Lesson 7: Metals, non-metals and the noble gases
8	19-Oct-15	Lesson 8: Patterns in Reactivity: Group 1
		Lesson 9: Patterns in Reactivity: Halogens
		Lesson 9: Patterns in Reactivity: Halogens
		Lesson 10: Review/ EOT
		Lesson 10: Review/ EOT
1/2 T	26-Oct-15	
9	02-Nov-15	Review: Cells
		Review: Movement through Cells
		Review: Osmosis Practical and Workbook Completion
		Review: Practical and Workbook Completion
		Forces and their interactions. Lesson 1 - Introduction to forces
10	09-Nov-15	Lesson 2 - Resultant Forces
		Lesson 3 - Weight
		Lesson 4 - Work
		Lesson 5 - Energy Transfers
		Lesson 6 - Stretching and Squashing
11	16-Nov-15	Lesson 7 - Hooke's Law
		Required Practical - Hooke's Law

	ICT skills
	practicals
	Required Practicals
	review lessons/EuT
	AfL/Extended Writing opportunities
	Home Learning

Key skills such as
practicals and
Mathematical
skills

Termly
Assessment
Dates shared

Biology Unit	Chapter	Title	Lesson Count	Years			Chemistry Unit	Chapt	
Cells and Organisation	B1	Cell Structure and Transport	10	9			Atoms, bonding and moles	C1	Atc
	B2	Cell Division	4	9				C2	The
	B3	Organisation and the Digestive System	7	9				C3	Struc
	B4	Organising animals and plants	9	9				C4	Chem
Disease and Bioenergetics	B5	Communicable Diseases	11 (4 Triple Only)	10			Chemical Reactions and Energy Changes	C5	Che
	B6	Preventing and Treating Disease	6 (2 Triple Only)	10				C6	
	B7	Non-Communicable Diseases	5	10				C7	En
	B8	Photosynthesis	4	10			Rates, Equilibrium and organic Chemistry	C8	Rates
	B9	Respiration	4	10				C9	Cruc
Biological Response	B10	The Human Nervous System	6 (3 Triple Only)	11				C10	Org
	B11	Hormonal Coordination	10 (2 Triple only)	11			Analysis and Earths Resources	C11	
	B12	Homeostasis in Action	5 Triple only	11				C12	Che
Genetics and Reproduction	B13	Reproduction	10 (3 Triple Only)	11				C13	The E
	B14	Variation and Evolution	7 (2 Triple Only)	11				C14	The E
	B15	Genetics and Evolution	10 (4 Triple Only)	11				C15	Usin
Ecology	B16	Adaptation Interdependence and Competition	8	10					
	B17	Organising an Ecosystem	4 (1 Triple Only)	10					
	B18	Biodiversity and Ecosystems	12 (6 Triple Only)	10					
Physics Unit	Chapter	Title	Lesson Count	Years					
Energy and Energy Resources	P1	Conservation and Dissipation of energy	9	10					
	P2	Energy Transfer by Heating	5 (2 Triple Only)	10					
	P3	Energy resources	5	10					
Particles at Work	P4	Electric Circuits	6	10					
	P5	Electricity in the Home	5	10					
	P6	Molecules and Matter	7 (1 Triple Only)	10					
	P7	Radioactivity	9 (4 Triple only)	11					
Forces in Action	P8	Forces in Balance	9 (3 Triple Only)	9					
	P9	Motion	4	9					
	P10	Forces and Motion	8 (3 Triple Only)	9					
	P11	Force and Pressure	4 (3 Triple Only)	11					
Waves Electromagnetism and Space	P12	Wave properties	7 (3 Triple Only)	11					
	P13	Electromagnetic Waves	5	11					
	P14	Light	5 (4 Triple Only)	11					
	P15	Electromagnetism	8 (5 Triple Only)	11					
	P16	Space	5 Triple Only	Triple					

Combined Science Routethrough - Year 1

Week	Chapter	Title	Total Lessons	Kerboodle Resources	Skills focus	TA/Parents Evenings/ Book Look
1	B1	Cell Structure and Transport	10			
	B1.1					
	B1.2					
	B1.3					
	B1.4					
2	B1.5					
	B1.6					
	B1.7					
	B1.8					
3	B1.9					
	B1.10					
	Review					
4	C1	Atomic Structure	8			
	C1.1					
	C1.2					
	C1.3					
5	C1.4					
	C1.5					
	C1.6					
6	C1.7					
	C1.8					
	Review					
7	P8	Forces in Balance	9 (3 Triple Only)			
	P8.1					
	P8.2					
	P8.3					
8	P8.4					
	P8.5					
	P8.6					
9	P8.7					
	P8.8					
	P8.9					
	Review					
10	B2	Cell Division	4			
	B2.1					
	B2.2					
	B2.3					
11	B2.4					
	Review					
			6 (2 Triple			



Google Classroom



Same as before 😊